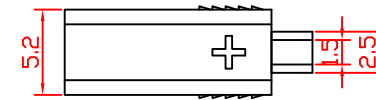
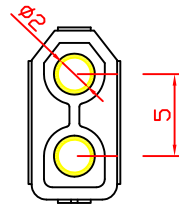
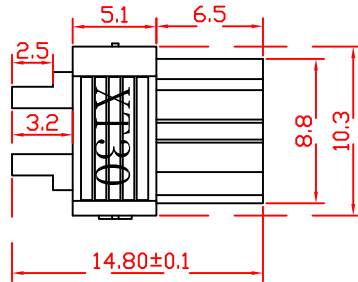
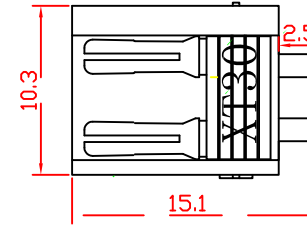
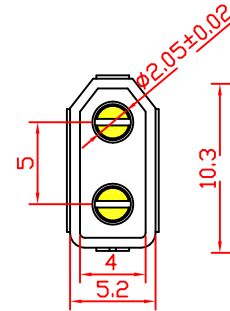
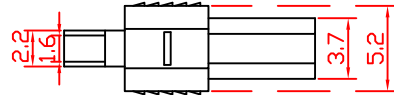
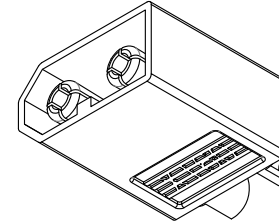
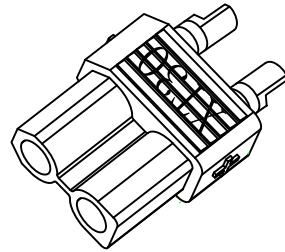


Specifications:
 Plastic material:Nylon
 Metal material:Copper
 Rated current:20A-30A
 Rated voltage:300V
 Joint way:AC
 Temperature Range:-30°C~+200°C



KLS ELECTRONIC CO., LTD.

客户
Customer

单位
Units

MM

客户料号
Customer P/N

公司料号
Company P/N

L-KLS1-XT30

产品名称

XT30

审核
Dhecking

批准
Approved

绘图
Drawing

2	PCS	1	Color	Yellow
1	PCS	1	Connector	XT30 Male and Female
项目	单位	数量	物料编号	物料规格
NOTE	Drawing not to scale hidden lines not shown all dimension IN/MM			

颜色



日期
DATE

日期
DATE

日期
DATE 2015-10-09