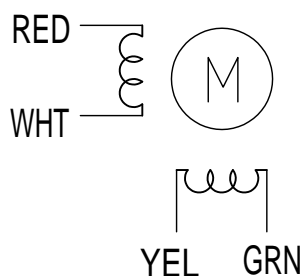


# HIGH TORQUE HYBRID STEPPING MOTOR SPECIFICATIONS

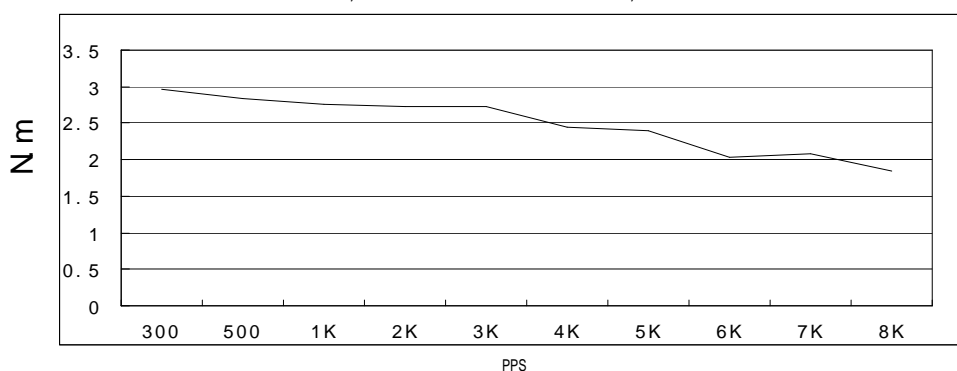
General specifications		Electrical specifications	
Step Angle (°)	1.8	Rated Voltage (V)	2.53
Temperature Rise (°C)	80 Max (rated current, 2 phase on)	Rated Current (A)	5.5
Ambient Temperature (°C)	-20~+50	Resistance Per Phase ( $\pm 0\% \Omega$ )	0.46 (25°C)
Number of Phase	2	Inductance Per Phase ( $\pm 20\% \text{mH}$ )	4
Insulation Resistance (M $\Omega$ )	100 Min (500VDC)	Holding Torque (N.m)	4.6
Insulation Class	Class B	Detent Torque (N.m)	0.12
Max.radial force (N)	220 (20mm from the flange)	Rotor Inertia (g. cm <sup>2</sup> )	1400
Max.axial force (N)	60	Weight (Kg)	2.4

## ● Wiring Diagram:

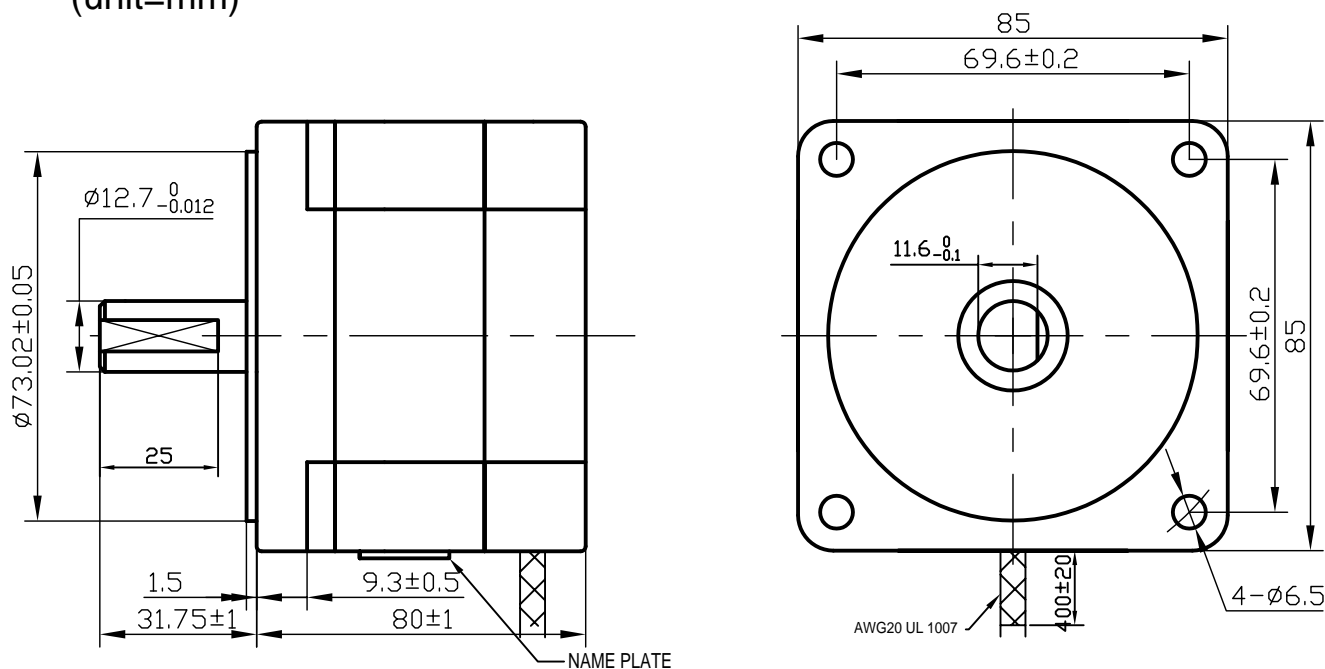


## ● Pull out torque curve:

VOLTAGE: 110VAC, CONSTANT CURRENT:5.5A,WZM-ZH110MS HLAIF STEP



## ● Dimensions: (unit=mm)



△					SY85STH80-5504A	TECHNICAL CONDITIONS
△						
REV	REVISIONS	DESCRIPTION	BY	DATE	CHANGZHOU SONGYANG MACHINERY & ELECTRONICS NEW TECHNIC INSTITUTE	110080000
DRAW	王凯-2009.7.13					
CHECK						
APPROVE						

This document was created with Win2PDF available at <http://www.daneprairie.com>.  
The unregistered version of Win2PDF is for evaluation or non-commercial use only.