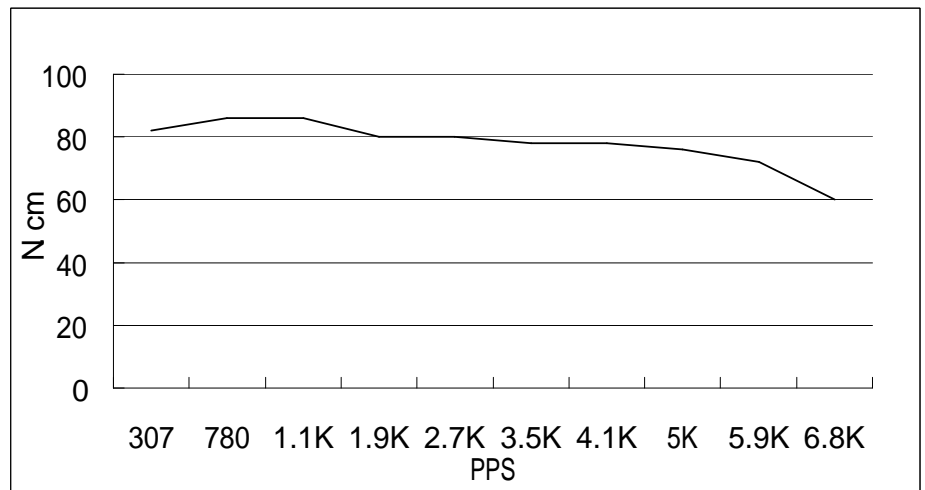


HIGH TORQUE HYBRID STEPPING MOTOR SPECIFICATIONS

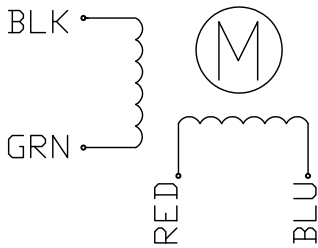
General specifications		Electrical specifications	
Step Angle (°)	0.9	Rated Voltage (V)	2.5
Temperature Rise (°C)	80 Max (rated current, 2 phase on)	Rated Current (A)	2.8
Ambient temperature (°C)	-20~+50	Resistance Per Phase(±0%Ω)	0.9 (25°C)
Number of Phase	2	Inductance Per Phase(±20% μ H)	4.5
Insulation Resistance (M Ω)	100 Min (500VDC)	Holding Torque (Kg.cm)	12.6
Insulation Class	Class B	Detent Torque (Kg.cm)	0.4
Max.radial force (N)	75 (20mm from the flange)	Rotor Inertia (g.cm ²)	300
Max.axial force (N)	15	Weight (Kg)	0.7

● Pull out torque curve:

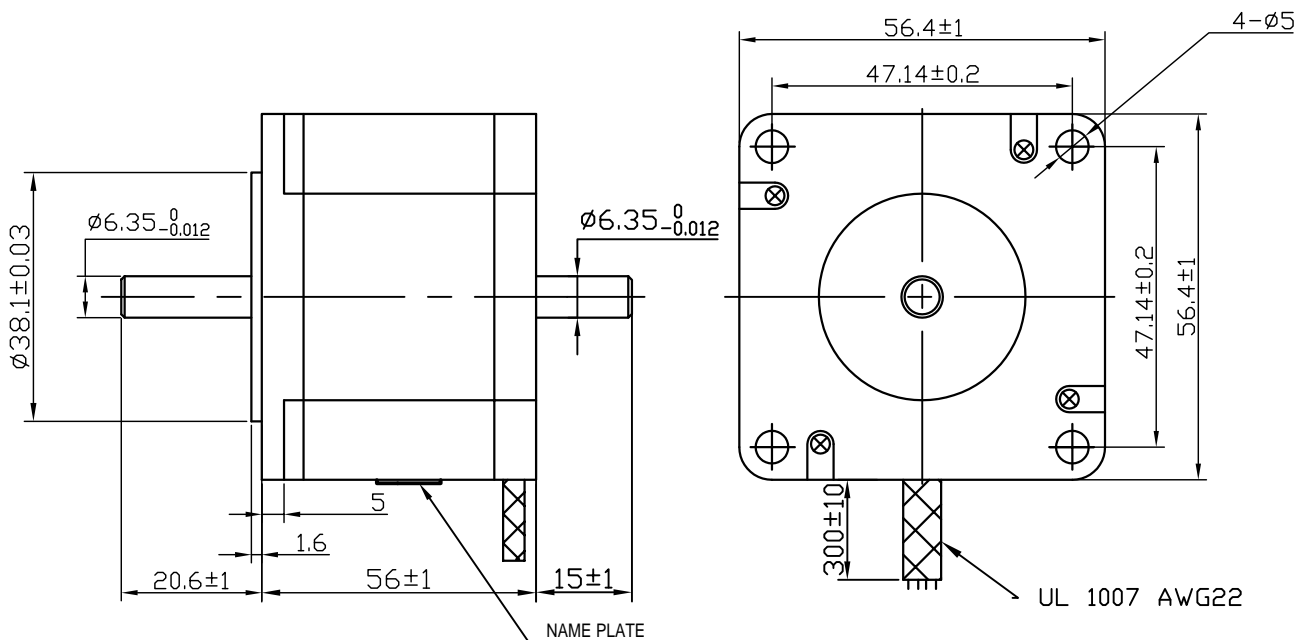
VOLTAGE: 30VDC, CONSTANT CURRENT: 2.8A, HALF STEP



● Wiring Diagram:



● Dimensions:
(unit=mm)



△					SY57STH56-2804MB	TECHNICAL CONDITIONS
△						
REV	REVISIONS	DESCRIPTION	BY	DATE	CHANGZHOU SONGYANG MACHINERY & ELECTRONICS NEW TECHNIC INSTITUTE	070056007
DRAW	王凯					
CHECK						
APPROVE						

This document was created with Win2PDF available at <http://www.daneprairie.com>.
The unregistered version of Win2PDF is for evaluation or non-commercial use only.