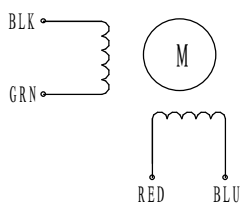


HIGH TORQUE HYBRID STEPPING MOTOR SPECIFICATIONS

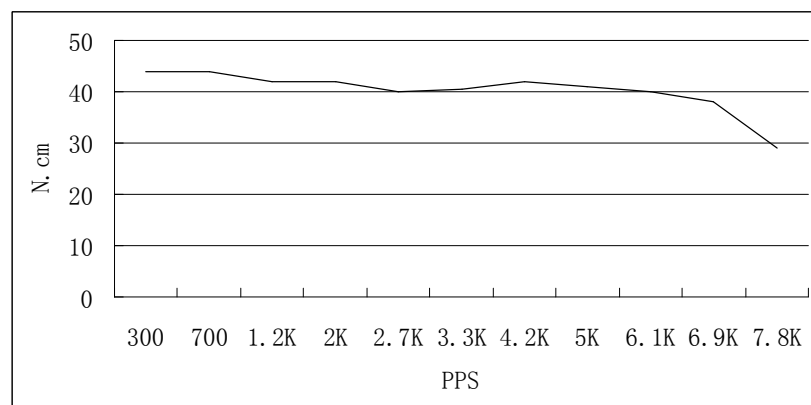
General specifications		Electrical specifications	
Step Angle (°)	0.9	Rated Voltage (V)	2.0
Temperature Rise (°C)	80 Max (rated current, 2 phase on)	Rated Current (A)	2.8
Ambient Temperature (°C)	-20 ~ +50	Resistance Per Phase ($\pm 10\%$ Ω)	0.7 (25°C)
Number of Phase	2	Inductance Per Phase ($\pm 20\%$ mH)	2.2
Insulation Resistance (M Ω)	100 Min (500VDC)	Holding Torque (kg.cm)	5.5
Insulation Class	Class B	Detent Torque (kg.cm)	0.21
Max. radial force (N)	75 (20mm from the flange)	Rotor Torque (g.cm ²)	120
Max. axial force (N)	15	Weight (kg)	0.45

● Wiring Diagram :

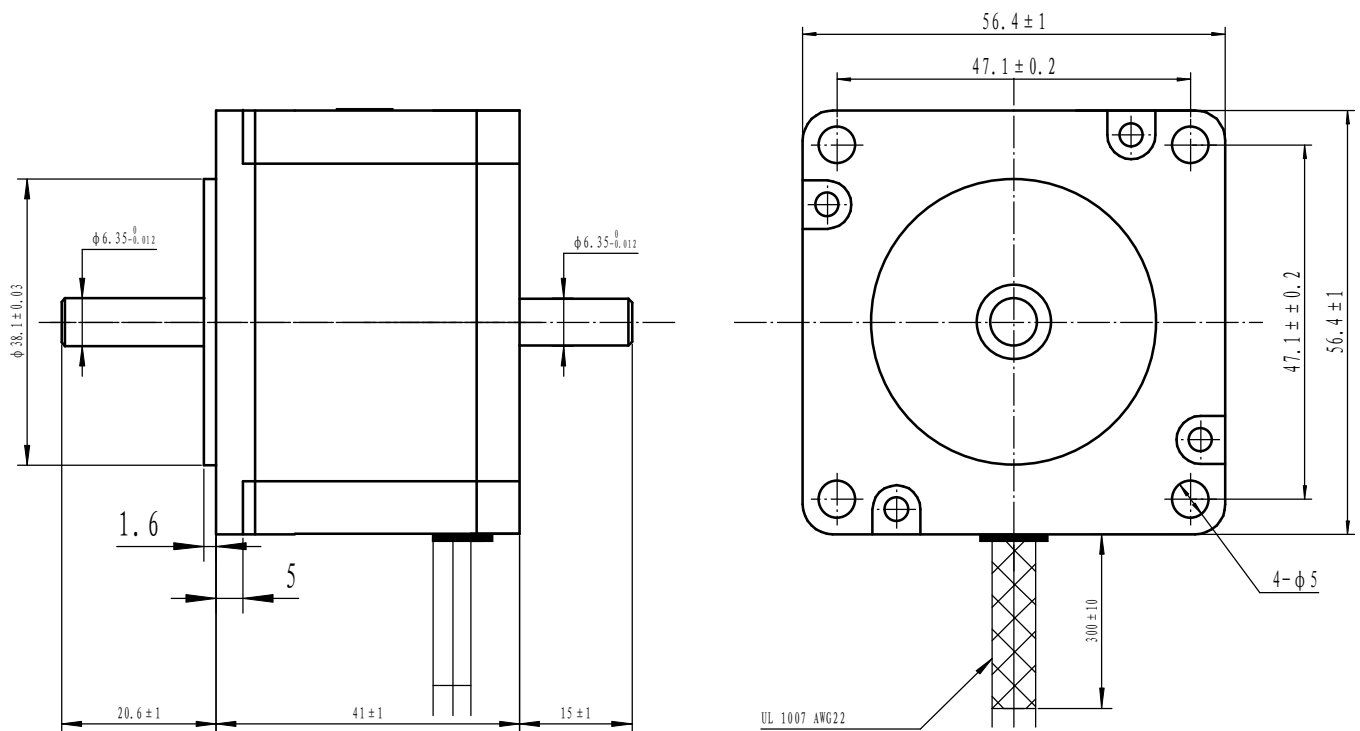


● Pull out torque curve :

VOLTAGE: 30VDC, CONSTANT CURRENT: 2.8A, HALF STEP



● Dimensions:
(unit=mm)



					SY57STH41-2804MB	TECHNICAL CONDITIONS
REV	REVISIONS	DESCRIPTION	BY	DATE	CHANGZHOU SONGYANG MACHINERY & ELECTRONICS NEW TECHNIC INSTITUTE	070041007
DRAW						
CHECK						
APPROVE						

This document was created with Win2PDF available at <http://www.win2pdf.com>.
The unregistered version of Win2PDF is for evaluation or non-commercial use only.
This page will not be added after purchasing Win2PDF.