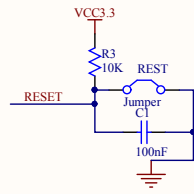


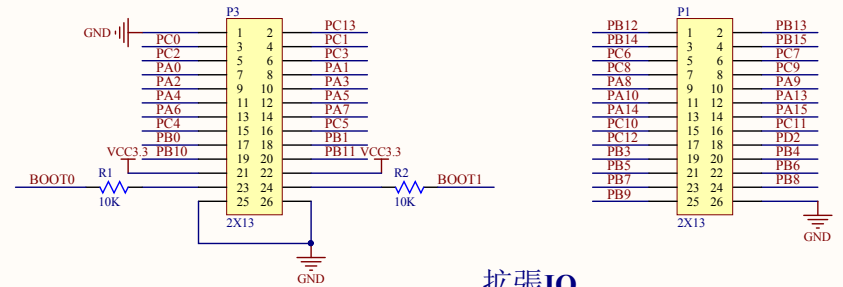
JTAG



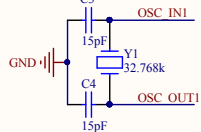
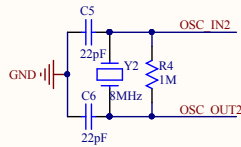
RESET

STM32起動モード設定

BOOT0	BOOT1	起動モード
0	0/1	ユーザFlash
1	0	ISPモード
1	1	内部RAM



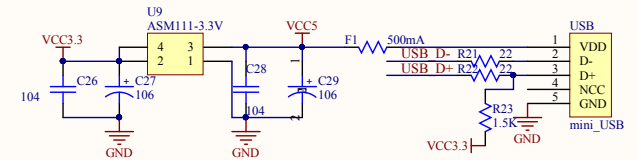
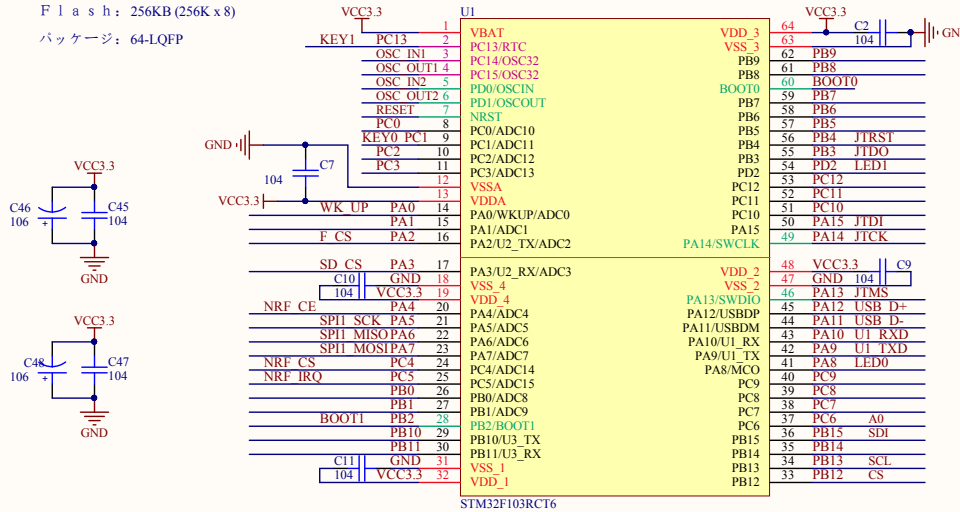
拡張IO



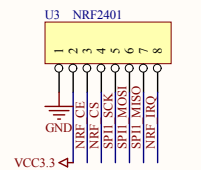
発振器

STM32--CPU

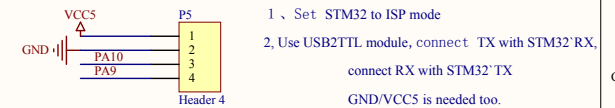
STM32F103RCT6 周波数: 72MHz
 RAM: 48K x 8
 Flash: 256KB (256K x 8)
 パッケージ: 64-LQFP



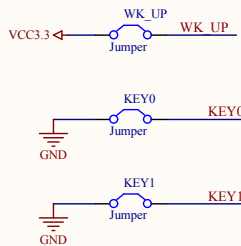
USB--STM32USB_SLAVE



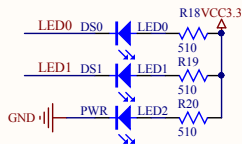
NRF2401 I/F



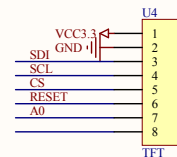
ISPダウンロードポート



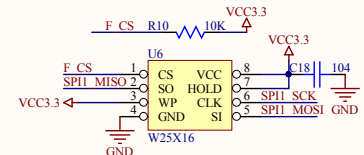
ユーザキー



LED



OLED 液晶



FLASH--データ保存

Title		
Size	Number	Revision
A3		
Date:	2014-9-15	Sheet of
File:	C:\Documents and Settings\... \MINI-STM32\...	33/36

Description	Designator	Footprint	Quantity	Comment	Value
GRM39 X7R102K50PT	C1, C12	0603C	2	100nF	100pF
	C2, C7, C9, C10, C11, C18, C26, C28, C45, C47	0603J	10	104	
CAP CHIP 20P 50V(+/-5% COG 0603)	C3, C4	0603J	2	15pF	20pF
CAP CHIP 20P 50V(+/-5% COG 0603)	C5, C6	0603J	2	22pF	20pF
	C27, C29	10UF_T	2	106	
	C46, C48	TAN-B	2	106	
	F1	C1210	1	500mA	
Header, 10-Pin, Dual row, Right Angle	JTAG	IDC20	1	10X2	
Jumper Wire	KEY0, KEY1, REST, WK_UP	key4	4	Jumper	
	LED0	LED0805	1	DS0	
	LED1	LED0805	1	DS1	
	LED2	LED0805	1	PWR	
Header, 13-Pin, Dual row	P1, P3	HDR2X13	2	2X13	
Header, 4-Pin	P5	HDR1X4	1	Header 4	
	R1, R2, R3, R5, R6, R7, R8, R9, R10	0603J	9	10K	
	R4	R0603	1	1M	
	R18, R19, R20	0603J	3	510	
	R21, R22	0603J	2	22	
	R23	0603J	1	1.5K	
	U1	QFP64/P0.5/W12	1	STM32F103RCT6	
8 Pin Header	U3	HDR2X4	1	NRF2401	
Header, 8-Pin	U4	HDR1X8	1	TFT	
	U6	SOIC8P	1	W25X16	
Header, 2-Pin, Dual row, Right Angle	U9	SOT223	1	ASM111-3.3V	
	USB	MINIUSB	1	mini_USB	
Crystal 8MHz PLUG	Y1	32.768k	1	32.768k	8MHz
Crystal 8MHz PLUG	Y2	smt-xtal	1	8MHz	8MHz