

RCA JACK Series

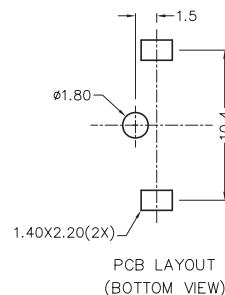
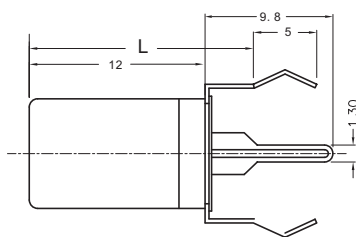
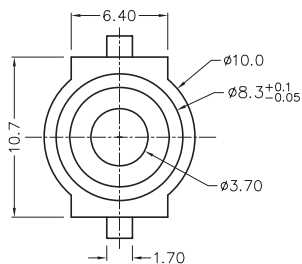
KLS1-RCA-106 Metal Vertical Pin RCA Jack

Electrical Specification:

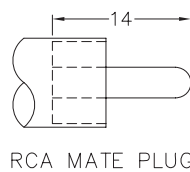
Contact resistance : 30mΩ Max
 Insulation resistance : 50MΩ Min at DC 500V
 Withstand voltage : AC 500V(50Hz) 1min
 Operating Temperature : -25°C~+85°C

Materials

Insulator : PBT UL94V-0
 Insert Ring : ABS UL94V-0
 Center Pin : Brass
 Bracket : C.R.S.
 Barrel : C.R.S.



| | |
|-----------|---------|
| MODEL NO. | RCA-106 |
| SCHEMATIC | |



ORDER INFORMATION

Product NO.: KLS1-RCA-106-N-R-15.8mm

Pos. NO. _____ L: L1: 15.8mm
 RCA Jack Type _____ L2: 17.6mm
 N: Nickel Plated _____ L3: 19.7mm
 Color: R: Red or other size
 B: Black
 Y: Yellow
 W: White