

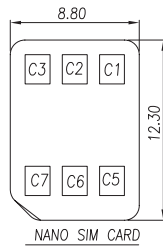
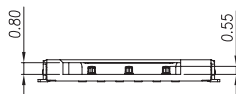
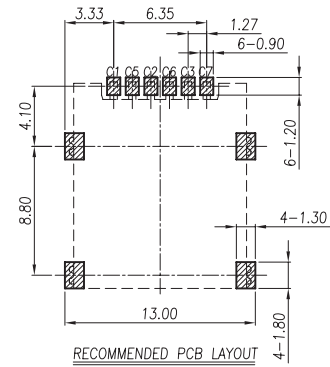
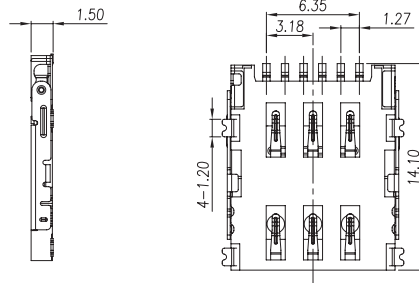
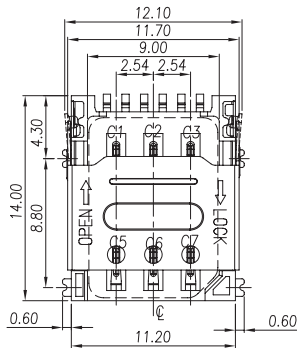
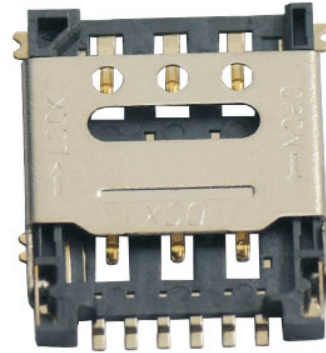
SIM Card Connector

SIM card Connector Series

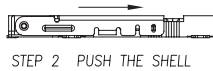
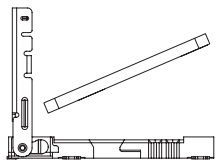
L-KLS1-SIM-077-6P-H1.5-R NANO SIM HINGE TYPE 1.50H

NOTES:

1. MATERIAL:
 - 1.1) PLASTIC:HIGH TEMP BLACK
 - 1.2) TERMINAL:COPPER ALLOY ,T=0.15±0.01
 - 1.3)SHELL:MATERIAL:SUS,T=0.20±0.01
2. TERMINAL PLATING:
 - 2-1:TERMINAL
CONTACT AREA:PLATING AU
SOLDER AREA:PLATING SN
UNDER PLATING:NICKEL 80u" Min.
 - 2-2:SHELL
PLATING NICKEL OVER ALL



SIM CARD	
Pin No.	NAME
C1	VCC
C2	RST
C3	CLK
C5	GND
C6	VPP
C7	I/O



ORDER INFORMATION

Product NO.: L-KLS1-SIM-077-6P-H1.5-R

Pos. NO. _____ SIM Card Connector Type _____