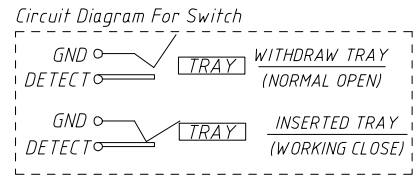
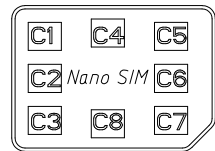


RECOMMENDED PCB LAYOUT
GENERAL TOLERANCE ±0.05



Electrical:
 Current Rating: 1 Amp/Pin.MAX.
 Voltage: 30V DC.MAX
 Low Level Contact Resistance: 30mΩ Max.Initially.
 Dielectric Withstanding Voltage: 500V AC MIN.For 1 minute.
 Insulation Resistance: 100MΩ Min.500V DC .For 1 minute.
 Durability: 1500 Cycles.
 Operating Force (Inserting & Withdrawal): 1N-10N.
 Operating Temp Range: -25°C TO +85°C (Including Terminal Temp.Rise)
 Storage Temp: -40°C TO +85°C



GENERAL TOLERANCE	ANGLE TOLERANCE	PROJECTION	Description:
.X ±0.15	.X ±5°	UNITS	Nano SIM CONN; Tray type, 6Pin,H1.55mm,with CD Pin L-KLS1-SIM-104-H1.55-R
.X ±0.03	.X ±3°	SHEET SIZE	
.XX ±0.05	.XX ±2°	KLS P/N:	
Draw by: Jenny	Date: 2018-03-10	 NingBo KLS ELECTRONIC CO.,L TD.	
Check by:	Date: 2018-03-10		
SCALE	SHEET 1 OF 1		