

ORDERING CODE

HLS-CMA3-1- DC12V - C-NS-P —

P: PC BOARD MOUNTING LEADS
 Q: QUICK CONNECT LEADS

NS: NO SHOULDER
 NIL: WITH SHOULDER

CONTACT FORM
 A: 1 FORM A C: 1 FORM C

NOMINAL VOLTAGE
 DC6V, DC12V, DC24V

TYPE

CONTACT DATA

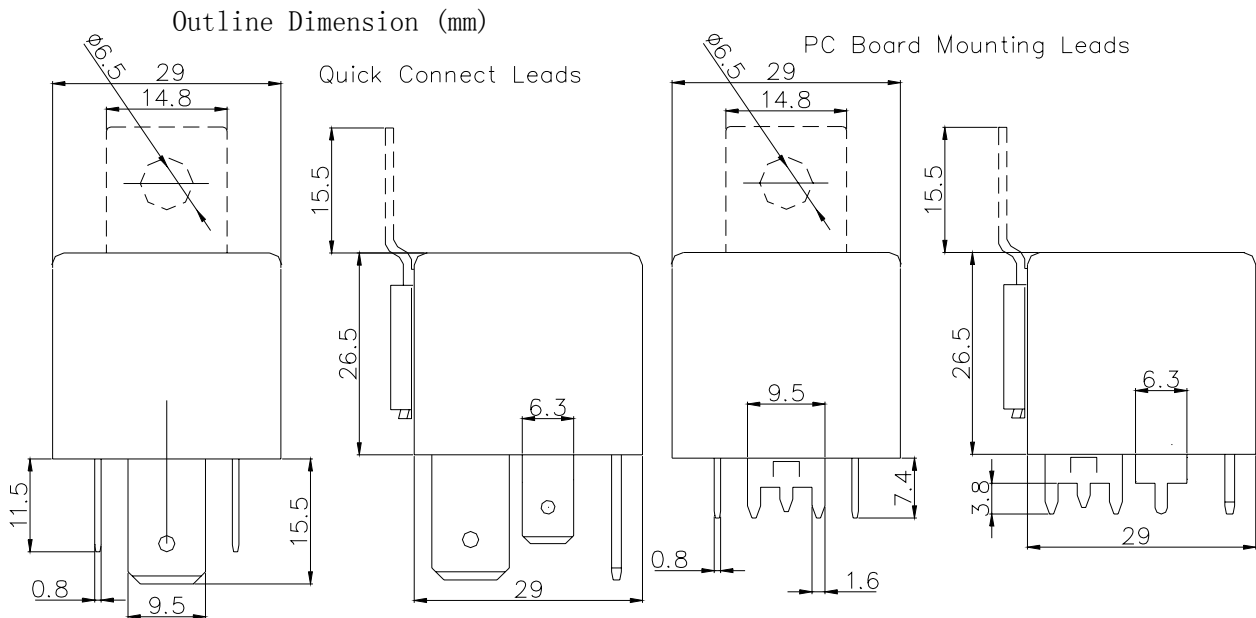
| | | |
|----------------------------|-------------------------------|-------------------------|
| Contact Form | 1A/1C | |
| Contact Material | Ag Alloy | |
| Contact Ratings | 1A:80A 14VDC 1C:NO/80A NC:60A | |
| Max Switching Voltage | 75VDC | |
| Max Switching Current | 80A | |
| Max Switching Power | 1120W | |
| Initial Contact Resistance | 100m Ω Max | at6VDC 1A |
| Life Expectancy Electrical | 100,000 | Operations (rated load) |
| Life Expectancy Mechanical | 10,000,000 | Operations (no load) |

GENERAL DATA

| | |
|---|---------------------------------|
| Insulation Resistance | 100M Ω min at500VDC |
| Dielectric Strength Between Open Contacts | 500VAC 50-60HZ (1 minute) |
| Dielectric Strength Between Contacts And Coil | 750VAC 50-60HZ (1 minute) |
| Operate Time | 10ms max |
| Release Time | 10ms max |
| Ambient Temperature | -40°C to +125°C |
| Shock Resistance | 10G |
| Vibration Resistance | 10-55Hz, 1.5mm double amplitude |
| Ambient humidity | 40-85% RH |
| Weight | Approx 45g |
| Safety Standard | |

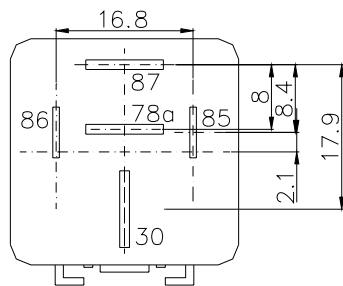
COIL DATA

| Rated Voltage (VDC) | Coil Resistance Ω ($\pm 10\%$) | Max Operate Voltage (VDC) | Min Release Voltage (VDC) | Max Applied Voltage (VDC) |
|------------------------|---|------------------------------|------------------------------|------------------------------|
| | | 1.8W | | |
| 6 | 20 | 3.9 | 0.6 | 7.8 |
| 12 | 80 | 7.8 | 1.2 | 15.6 |
| 24 | 320 | 15.6 | 2.4 | 31.2 |

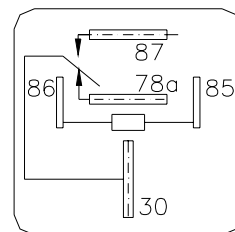


PC Board layout

Wiring Diagram



(Bottom View)



(Bottom View)