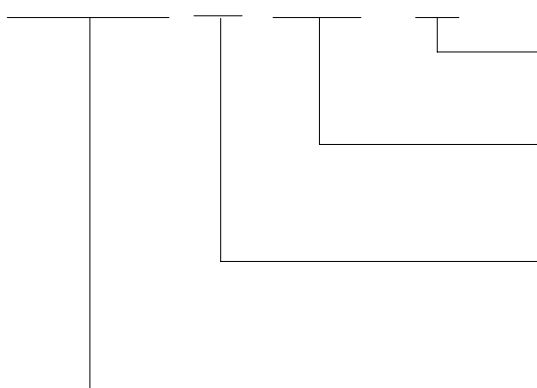


## ORDERING CODE

HLS-14F3 D - DC12V - C



CONTACT FORM

C:2 FORM C A:2 FORM A

NOMINAL VOLTAGE

DC3V,DC5V,DC6V,DC9V,DC12V,DC24V,DC48V

COIL

D...STANDARD|0.72W|

L...HIGH SENSITIVE|0.53W|

TYPE

## CONTACT DATA

|                            |                   |                         |
|----------------------------|-------------------|-------------------------|
| Contact Form               | 2A /2C            |                         |
| Contact Material           | Ag Alloy          |                         |
| Contact Ratings            | 5A240VAC/5A 30VDC |                         |
| Max Switching Voltage      | 250VAC/110VDC     |                         |
| Max Switching Current      | 5A                |                         |
| Max Switching Power        | 1250VA/150W       |                         |
| Initial Contact Resistance | 50m Ω Max         | at6VDC 1A               |
| Life Expectancy Electrical | 100,000           | Operations (rated load) |
| Life Expectancy Mechanical | 10,000,000        | Operations (no load)    |

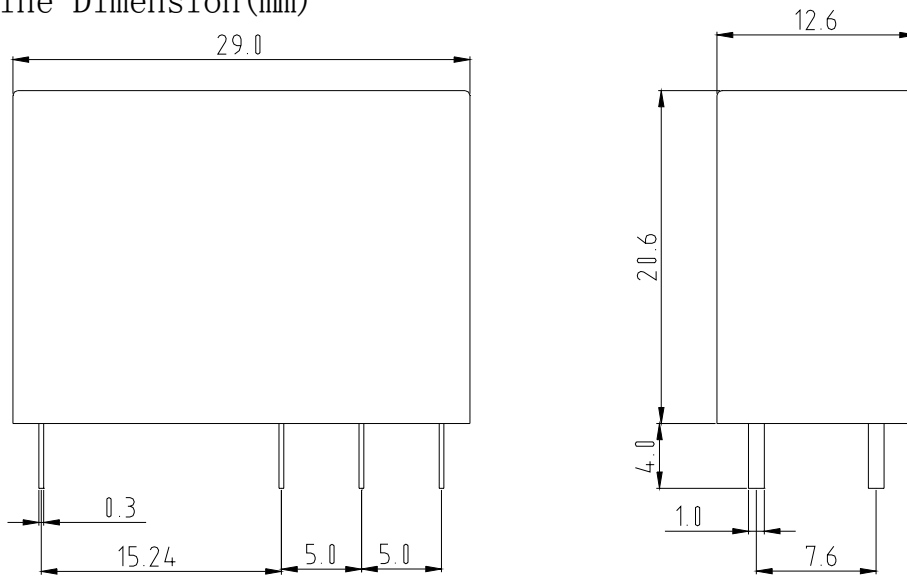
## GENERAL DATA

|   |                                |      |
|---|--------------------------------|------|
| Insulation Resistance                         | 1000M Ω Min at500VDC           |      |
| Dielectric Strength Between Open Contacts     | 1000VAC 50-60HZ (1 minute)     |      |
| Dielectric Strength Between Contacts And Coil | 5000VAC 50-60HZ (1 minute)     |      |
| Operate Time                                  | 15ms max                       |      |
| Release Time                                  | 8ms max                        |      |
| Ambient Temperature                           | -30°C to+70°C                  |      |
| Shock Resistance                              | Malfunction                    | 10G  |
|   | Destruction                    | 100G |
| Vibration Resistance                          | 10-55Hz,1.5mm double amplitude |      |
| Ambient humidity                              | 20-85% RH                      |      |
| Weight  | Approx 13g                     |      |
| Safety Standard                               | TUV CE CQC                     |      |

**COIL DATA**

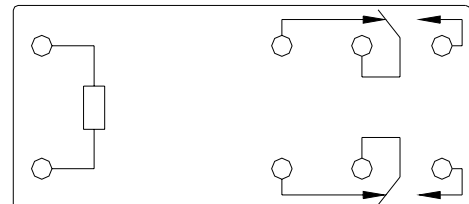
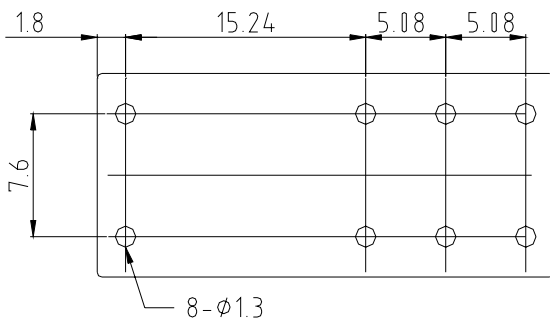
| Rated Voltage<br>(VDC) | Coil Resistance $\Omega$ ( $\pm 10\%$ ) |       | Max Operate Voltage<br>(VDC) | Min Release Voltage<br>(VDC) | Max Applied Voltage<br>(VDC) |
|------------------------|---|-------|------------------------------|------------------------------|------------------------------|
|                        | 0.53W                                   | 0.72W |                              |                              |                              |
| 3                      | 17                                      | 12.5  | 2.4                          | 0.15                         | 3.9                          |
| 5                      | 50                                      | 36    | 4                            | 0.25                         | 6.5                          |
| 6                      | 68                                      | 50    | 4.8                          | 0.3                          | 7.8                          |
| 9                      | 155                                     | 115   | 7.2                          | 0.45                         | 11.7                         |
| 12                     | 270                                     | 200   | 9.6                          | 0.6                          | 15.6                         |
| 24                     | 1100                                    | 820   | 19.2                         | 1.2                          | 31.2                         |
| 48                     | 4400                                    | 3300  | 38.4                         | 2.4                          | 62.4                         |

Outline Dimension (mm)



PC Board layout

Wiring Diagram



(Bottom View)

(Bottom View)