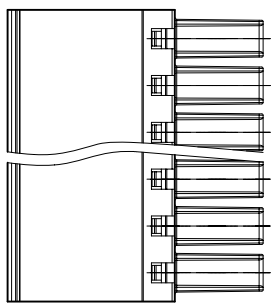
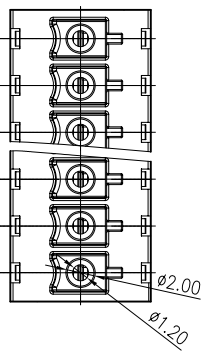
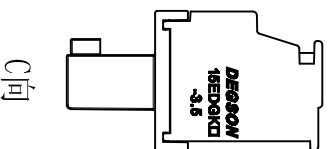
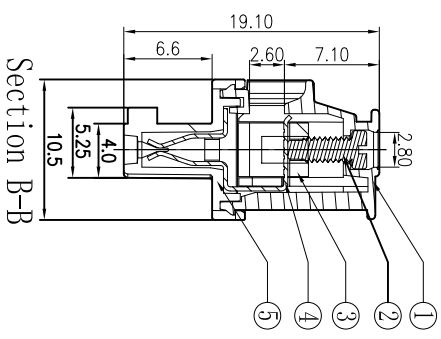
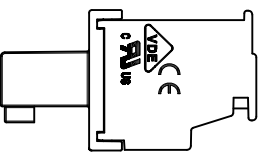
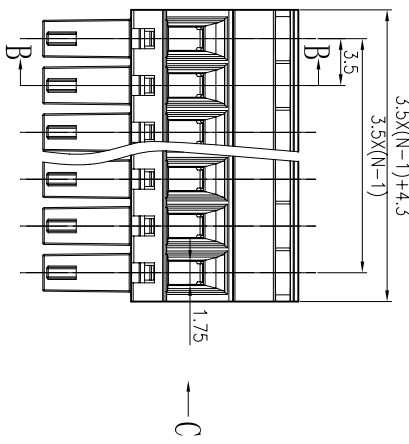
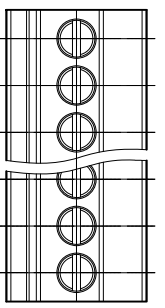


REVISION RECORD			
REV/ECO	DESCRIPTION	DRFT	DATE

- Notes:
1. Pitch: 3.5mm, Poles: 2-24P
 2. Rated voltage/current: UL 300V/8A
VDE 250V/7A
 3. Operation temperatures: -40°C ~ +105°C
 4. Withstanding Voltage: AC2000V/1Min
 5. Insulation Resistance: 5000MΩ /DC1000V
 6. Wire Range: 28~16AWG, 0.5-1.5mm²
 7. Max. Torque Value: M2, 2.04kgf.cm (1.77lb. in)
 8. Undimensioned Tolerances:

Pitch range in mm	Nominal dimension range in mm	
over 6 to 10	over 30 to 60	—
over 10 to 24	over 60 to 100	∩
over 24 to 30	over 100 to 150	∇
±0.10 to ±0.15	±0.25 to ±0.3	±0.5 to ±0.7
±0.10	±0.15	±0.5 to ±1



ITEM	NAME OF PART	NO. OF PART	Q'TY	MATERIAL	NOTES
1	15EDGKA/B-3.5-100A-Housing	1033A0YXXE(H)	1	PA66	UL94V-0
2	15EDGKA/B-3.5-100A-Cover	1033C0YXXE(H)	1	PA66	UL94V-0
3	15EDGKA/B-100A-C1amp	1033B00020(H)	XX	Phosphor bronze	SnCe
4	15EDGKA/B-100A-C1amp	X000000010(H)	XX	Brass	Ni Plated
5	15EDG Screw-M2.0	S000001360(H)	XX	Steel	Cr ³⁺ /Zn

DETACHED LISTS

UNIT	MIN	MAX
MM	±0.05	±0.10
INCH	±0.002	±0.004

DRTO	Apple	DATE	04/11/09
CHKD	DATE	DATE	DATE
APP'D	DATE	DATE	DATE

NAME: 15EDGKA-3.5-XXP-1Y-100A(H)

DRAWING NO.: 15EDGKA-3.5-E100

DO NOT SCALE DRAWING

SCALE	1:1
FINISH	
ANGLES ± 1°	
THIRD ANGLE PROJECTION	