

Modular Jack With LED Series

KLS12-108-8P Modular Jack With LED 56 Series 1x1 Ports

MATERIAL

- 1.Housing Material: Glass Filled Plyester UL94V-0 PBT, Nylon
- 2.Housing Color: Black or others
- 3.Contact Material: Phosphor Bronze $\Phi 0.46\text{mm}$
- 4.Plating: Gold plating over nickel. Gold plating thickness
1.5u" / 3u" / 6u" / 15u" / 30u" / 50u"
- 5.Shield: 0.23 Thickness Brass with nickel plated

ELECTRICAL

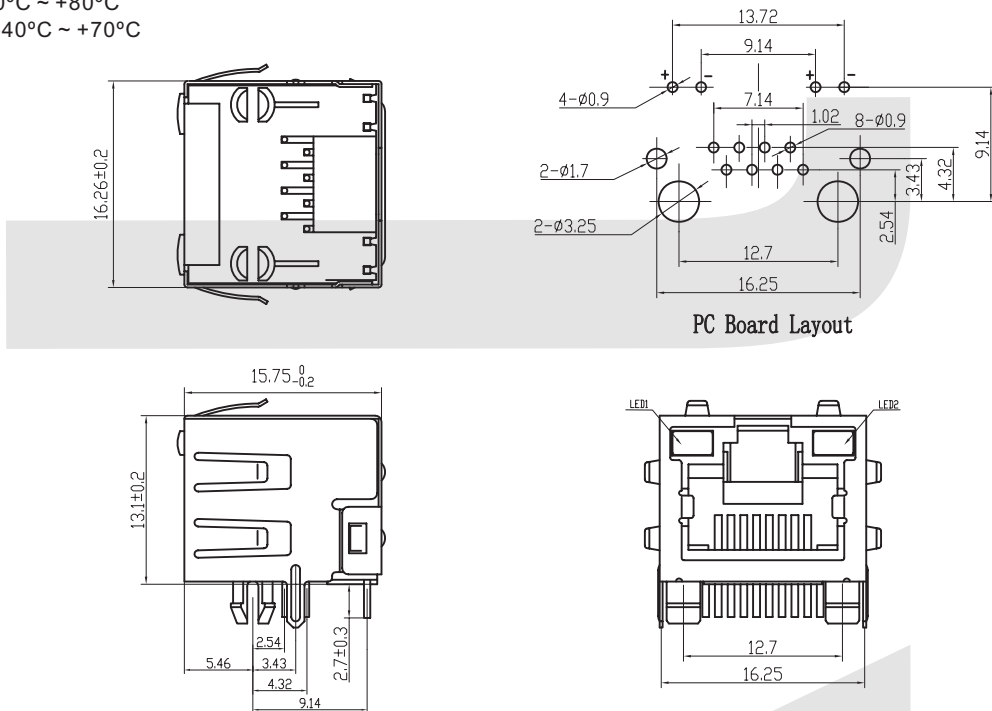
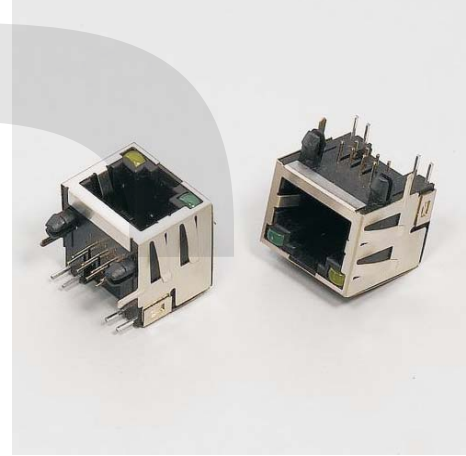
- 1.Current Rating: 1.5 Amp
- 2.Voltage Rating: 125VAC
- 3.Contact Resistance: 30 M Ω Max.
- 4.Insulation Resistance: 500 M Ω Min. @ 500 VDC
- 5.Withstanding Voltage: 1000VAC RMS 50Hz 1 minute

MECHANICAL

- 1.Durability: 750 cycles Min.
- 2.PCB Retention pre-solder: 1 LB Min.

ENVIRONMENTAL

- 1.Storage: -40°C ~ +80°C
- 2.Operation: -40°C ~ +70°C



ORDER INFORMATION

KLS12-108 - 8P8C - 1x1 - 2 - G/Y - 0 - XX - X

Part Number	Point No.	Ports	Shielded	LED Style	Back Peg	Gold Plating	Plastic
	8P8C Point	1x1-1 Ports 1x2-2 Ports 1x4-4 Ports 1x6-6 Ports 1x8-8 Ports	1-With Shielded 2-EMI Shielded 3-Top EMI Shielded	G/Y-Green / Yellow Y/G-Yellow / Green R/G-Red / Green G/R-Green / Red G/G-Green / Green Y/Y -Yellow / Yellow 0-Without LED	0-Without Back Peg 1-1 Back Peg 2-2 Back Peg	01-Fu" 02-3u" 03-6u" 04-15u" 05-30u" 06-50u	1-Nylon66 2-Nylon46 3-PBT

Modular Jack With LED Series

KLS12-108-8P Modular Jack With LED 56 Series 1x1 Ports

MATERIAL

- 1.Housing Material: Glass Filled Polyester UL94V-0 PBT, Nylon
- 2.Housing Color: Black or others
- 3.Contact Material: Phosphor Bronze $\Phi 0.46\text{mm}$
- 4.Plating: Gold plating over nickel. Gold plating thickness
1.5u" / 3u" / 6u" / 15u" / 30u" / 50u"
- 5.Shield: 0.23 Thickness Brass with nickel plated

ELECTRICAL

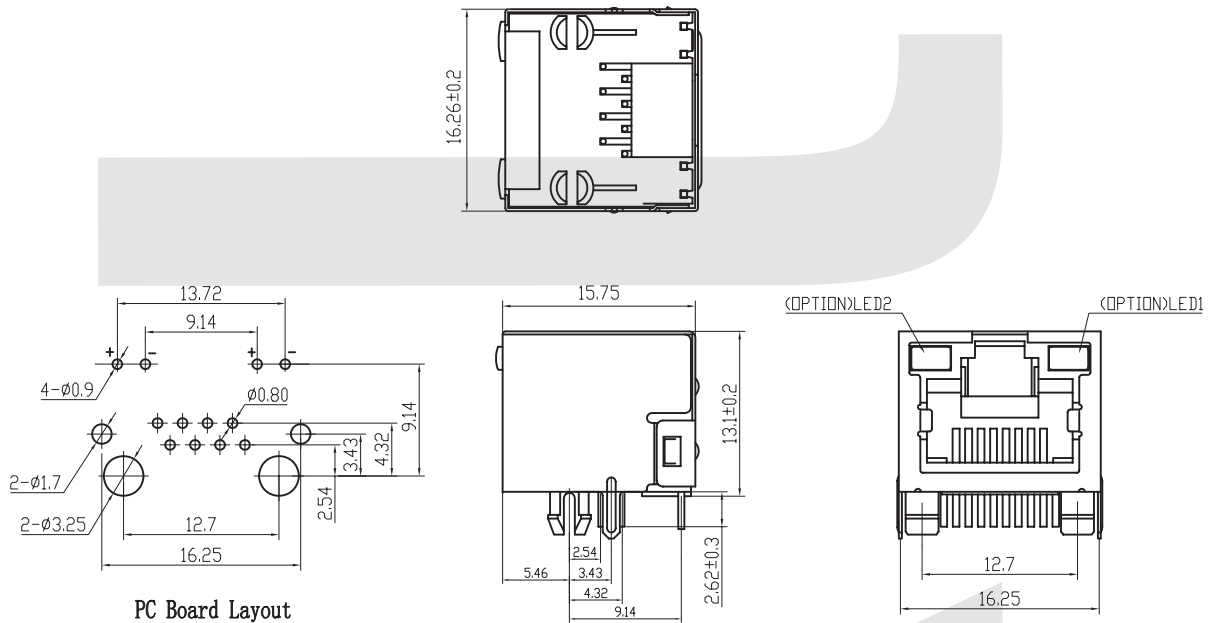
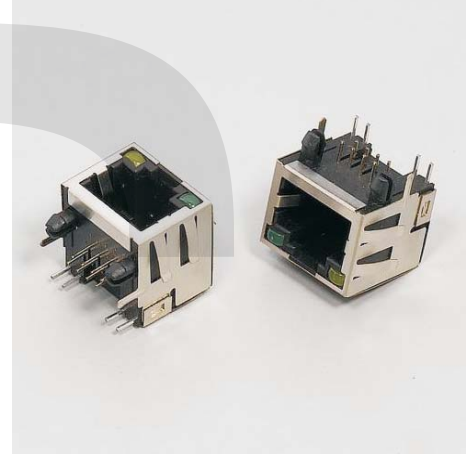
- 1.Current Rating: 1.5 Amp
- 2.Voltage Rating: 125VAC
- 3.Contact Resistance: 30 M Ω Max.
- 4.Insulation Resistance: 500 M Ω Min. @ 500 VDC
- 5.Withstanding Voltage: 1000VAC RMS 50Hz 1 minute

MECHANICAL

- 1.Durability: 750 cycles Min.
- 2.PCB Retention pre-solder: 1 LB Min.

ENVIRONMENTAL

- 1.Storage: -40°C ~ +80°C
- 2.Operation: -40°C ~ +70°C



ORDER INFORMATION

KLS12-108 - 8P8C - 1x1 - 1 - G/Y - 0 - XX - X

Part Number	Point No.	Ports	Shielded	LED Style	Back Peg	Gold Plating	Plastic
	8P8C Point	1x1-1 Ports 1x2-2 Ports 1x4-4 Ports 1x6-6 Ports 1x8-8 Ports	1-With Shielded 2-EMI Shielded 3-Top EMI Shielded	G/Y-Green / Yellow Y/G-Yellow / Green R/G-Red / Green G/R-Green / Red G/G-Green / Green Y/Y -Yellow / Yellow 0-Without LED	0-Without Back Peg 1-1 Back Peg 2-2 Back Peg	01-Fu" 02-3u" 03-6u" 04-15u" 05-30u" 06-50u	1-Nylon66 2-Nylon46 3-PBT

Modular Jack With LED Series

KLS12-108-8P Modular Jack With LED 56 Series 1x1 Ports

MATERIAL

- 1.Housing Material: Glass Filled Polyester UL94V-0 PBT, Nylon
- 2.Housing Color: Black or others
- 3.Contact Material: Phosphor Bronze $\Phi 0.46\text{mm}$
- 4.Plating: Gold plating over nickel. Gold plating thickness
1.5u" / 3u" / 6u" / 15u" / 30u" / 50u"
- 5.Shield: 0.23 Thickness Brass with nickel plated

ELECTRICAL

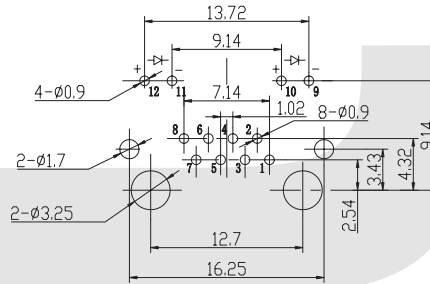
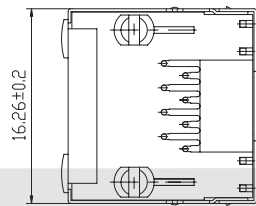
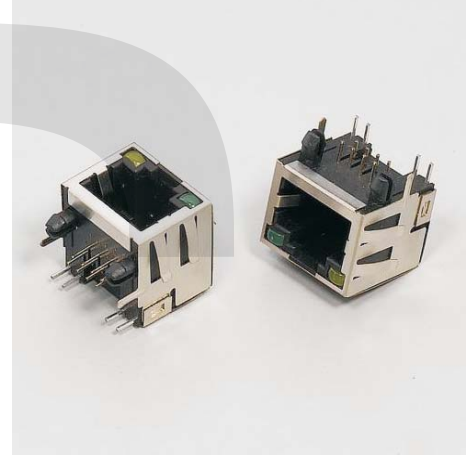
- 1.Current Rating: 1.5 Amp
- 2.Voltage Rating: 125VAC
- 3.Contact Resistance: 30 m Ω Max.
- 4.Insulation Resistance: 500 M Ω Min. @ 500 VDC
- 5.Withstanding Voltage: 1000VAC RMS 50Hz 1 minute

MECHANICAL

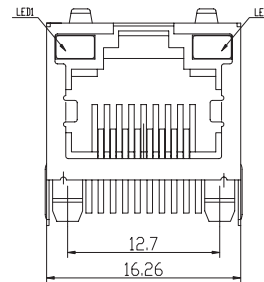
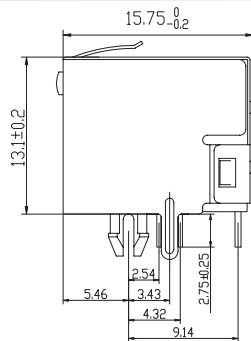
- 1.Durability: 750 cycles Min.
- 2.PCB Retention pre-solder: 1 LB Min.

ENVIRONMENTAL

- 1.Storage: -40°C ~ +80°C
- 2.Operation: -40°C ~ +70°C



PC Board Layout



ORDER INFORMATION

KLS12-108 - 8P8C - 1x1 - 3 - G/Y - 0 - XX - X

Part Number	Point No.	Ports	Shielded	LED Style	Back Peg	Gold Plating	Plastic
	8P8C Point	1x1-1 Ports 1x2-2 Ports 1x4-4 Ports 1x6-6 Ports 1x8-8 Ports	1-With Shielded 2-EMI Shielded 3-Top EMI Shielded	G/Y-Green / Yellow Y/G-Yellow / Green R/G-Red / Green G/R-Green / Red G/G-Green / Green Y/Y -Yellow / Yellow 0-Without LED	0-Without Back Peg 1-1 Back Peg 2-2 Back Peg	01-Fu" 02-3u" 03-6u" 04-15u" 05-30u" 06-50u	1-Nylon66 2-Nylon46 3-PBT

Modular Jack With LED Series

KLS12-108-8P Modular Jack With LED 56 Series 1x2 Ports

MATERIAL

- 1.Housing Material: Glass Filled Polyester UL94V-0 PBT, Nylon
- 2.Housing Color: Black or others
- 3.Contact Material: Phosphor Bronze $\Phi 0.46\text{mm}$
- 4.Plating: Gold plating over nickel. Gold plating thickness 1.5u" / 3u" / 6u" / 15u" / 30u" / 50u"
- 5.Shield: 0.23 Thickness Brass with nickel plated

ELECTRICAL

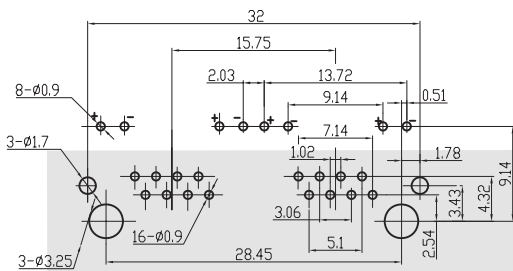
- 1.Current Rating: 1.5 Amp
- 2.Voltage Rating: 125VAC
- 3.Contact Resistance: 30 M Ω Max.
- 4.Insulation Resistance: 500 M Ω Min. @ 500 VDC
- 5.Withstanding Voltage: 1000VAC RMS 50Hz 1 minute

MECHANICAL

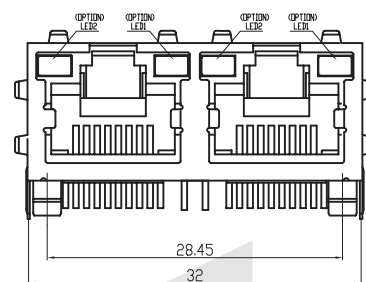
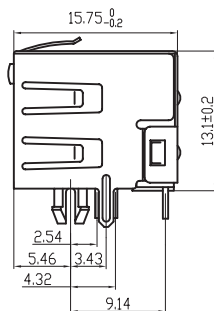
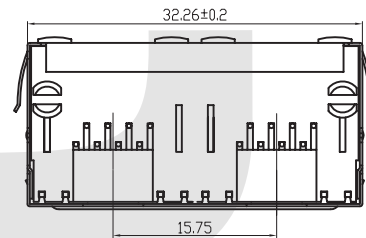
- 1.Durability: 750 cycles Min.
- 2.PCB Retention pre-solder: 1 LB Min.

ENVIRONMENTAL

- 1.Storage: -40°C ~ +80°C
- 2.Operation: -40°C ~ +70°C



PC Board Layout



ORDER INFORMATION

KLS12-108 - 8P8C - 1x2 - 2 - G/Y - 0 - XX - X

Part Number	Point No.	Ports	Shielded	LED Style	Back Peg	Gold Plating	Plastic
	8P8C Point	1x1-1 Ports 1x2-2 Ports 1x4-4 Ports 1x6-6 Ports 1x8-8 Ports	1-With Shielded 2-EMI Shielded 3-Top EMI Shielded	G/Y-Green / Yellow Y/G-Yellow / Green R/G-Red / Green G/R-Green / Red G/G-Green / Green Y/Y -Yellow / Yellow 0-Without LED	0-Without Back Peg 1-1 Back Peg 2-2 Back Peg	01-Fu" 02-3u" 03-6u" 04-15u" 05-30u" 06-50u	1-Nylon66 2-Nylon46 3-PBT

Modular Jack With LED Series

KLS12-108-8P Modular Jack With LED 56 Series 1x4 Ports

MATERIAL

- 1.Housing Material: Glass Filled Polyester UL94V-0 PBT, Nylon
- 2.Housing Color: Black or others
- 3.Contact Material: Phosphor Bronze $\Phi 0.46\text{mm}$
- 4.Plating: Gold plating over nickel. Gold plating thickness 1.5u" / 3u" / 6u" / 15u" / 30u" / 50u"
- 5.Shield: 0.23 Thickness Brass with nickel plated

ELECTRICAL

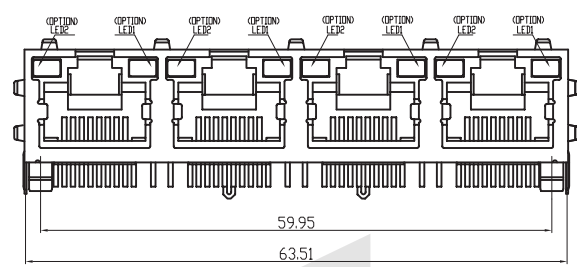
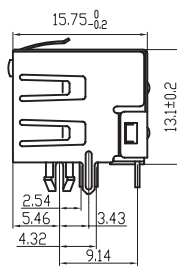
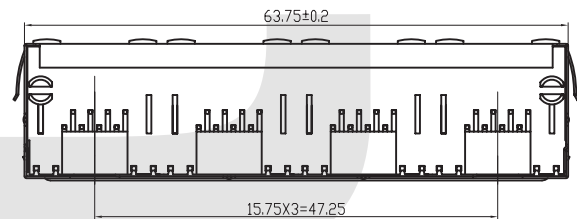
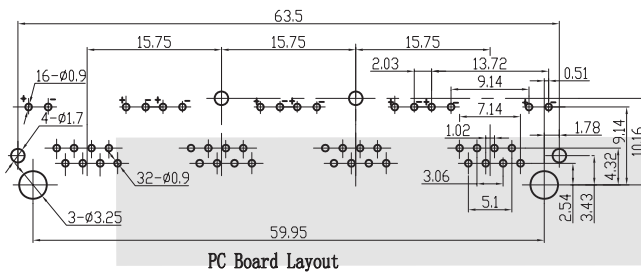
- 1.Current Rating: 1.5 Amp
- 2.Voltage Rating: 125VAC
- 3.Contact Resistance: 30 m Ω Max.
- 4.Insulation Resistance: 500 M Ω Min. @ 500 VDC
- 5.Withstanding Voltage: 1000VAC RMS 50Hz 1 minute

MECHANICAL

- 1.Durability: 750 cycles Min.
- 2.PCB Retention pre-solder: 1 LB Min.

ENVIRONMENTAL

- 1.Storage: -40°C ~ +80°C
- 2.Operation: -40°C ~ +70°C



ORDER INFORMATION

KLS12-108 - 8P8C - 1x4 - 2 - G/Y - 2 - XX - X

Part Number	Point No.	Ports	Shielded	LED Style	Back Peg	Gold Plating	Plastic
	8P8C Point	1x1-1 Ports 1x2-2 Ports 1x4-4 Ports 1x6-6 Ports 1x8-8 Ports	1-With Shielded 2-EMI Shielded 3-Top EMI Shielded	G/Y-Green / Yellow Y/G-Yellow / Green R/G-Red / Green G/R-Green / Red G/G-Green / Green Y/Y -Yellow / Yellow 0-Without LED	0-Without Back Peg 1-1 Back Peg 2-2 Back Peg	01-Fu" 02-3u" 03-6u" 04-15u" 05-30u" 06-50u	1-Nylon66 2-Nylon46 3-PBT

Modular Jack With LED Series

KLS12-108-8P Modular Jack With LED 56 Series 1x6 Ports

MATERIAL

- 1.Housing Material: Glass Filled Polyester UL94V-0 PBT, Nylon
- 2.Housing Color: Black or others
- 3.Contact Material: Phosphor Bronze $\Phi 0.46\text{mm}$
- 4.Plating: Gold plating over nickel. Gold plating thickness 1.5u" / 3u" / 6u" / 15u" / 30u" / 50u"
- 5.Shield: 0.23 Thickness Brass with nickel plated

ELECTRICAL

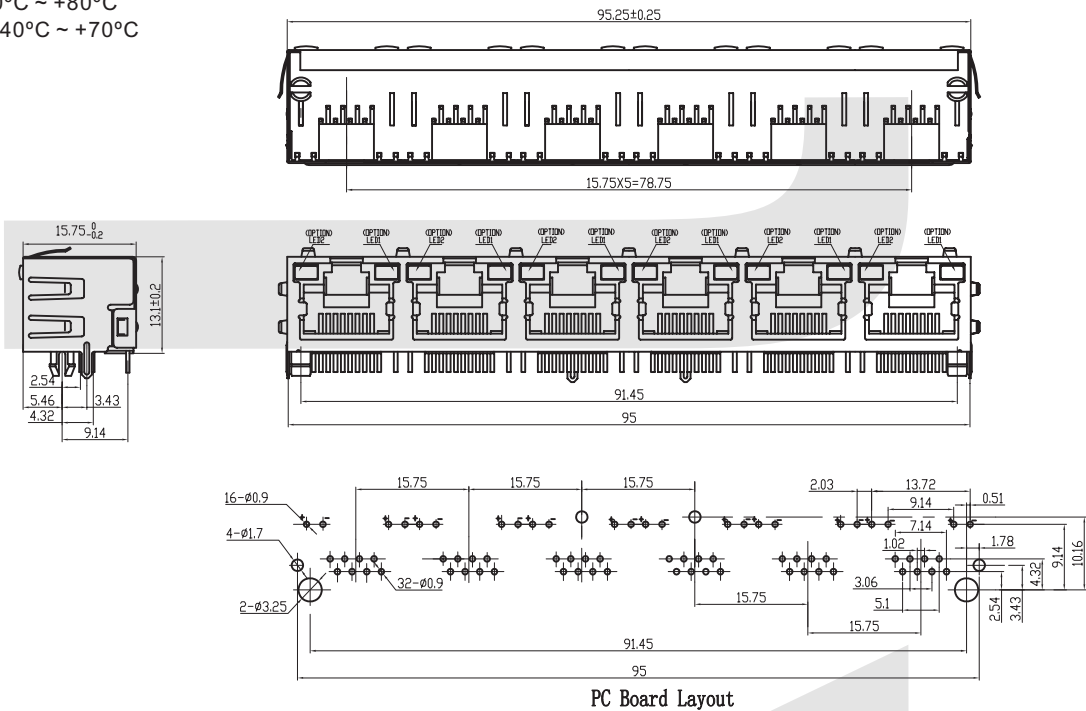
- 1.Current Rating: 1.5 Amp
- 2.Voltage Rating: 125VAC
- 3.Contact Resistance: 30 m Ω Max.
- 4.Insulation Resistance: 500 M Ω Min. @ 500 VDC
- 5.Withstanding Voltage: 1000VAC RMS 50Hz 1 minute

MECHANICAL

- 1.Durability: 750 cycles Min.
- 2.PCB Retention pre-solder: 1 LB Min.

ENVIRONMENTAL

- 1.Storage: -40°C ~ +80°C
- 2.Operation: -40°C ~ +70°C



ORDER INFORMATION

KLS12-108 - 8P8C - 1x6 - 2 - G/Y - 2 - XX - X

Part Number	Point No.	Ports	Shielded	LED Style	Back Peg	Gold Plating	Plastic
	8P8C Point	1x1-1 Ports 1x2-2 Ports 1x4-4 Ports 1x6-6 Ports 1x8-8 Ports	1-With Shielded 2-EMI Shielded 3-Top EMI Shielded	G/Y-Green / Yellow Y/G-Yellow / Green R/G-Red / Green G/R-Green / Red G/G-Green / Green Y/Y -Yellow / Yellow 0-Without LED	0-Without Back Peg 1-1 Back Peg 2-2 Back Peg	01-Fu" 02-3u" 03-6u" 04-15u" 05-30u" 06-50u	1-Nylon66 2-Nylon46 3-PBT

Modular Jack With LED Series

KLS12-108-8P Modular Jack With LED 56 Series 1x8 Ports

MATERIAL

- 1.Housing Material: Glass Filled Polyester UL94V-0 PBT, Nylon
- 2.Housing Color: Black or others
- 3.Contact Material: Phosphor Bronze $\Phi 0.46\text{mm}$
- 4.Plating: Gold plating over nickel. Gold plating thickness 1.5u" / 3u" / 6u" / 15u" / 30u" / 50u"
- 5.Shield: 0.23 Thickness Brass with nickel plated

ELECTRICAL

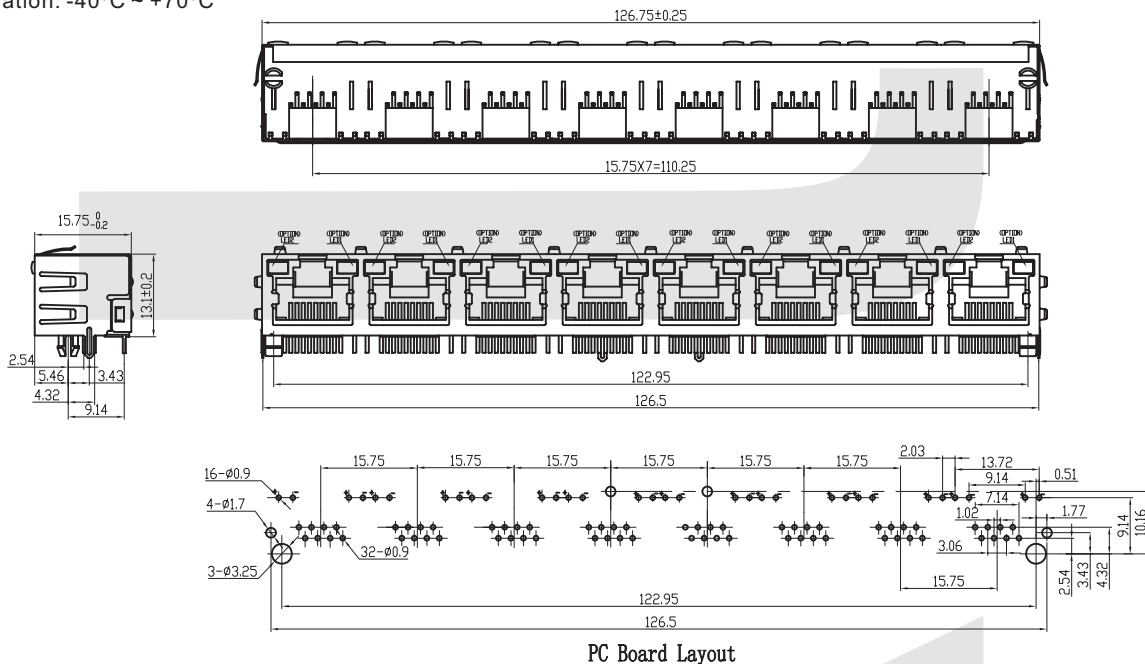
- 1.Current Rating: 1.5 Amp
- 2.Voltage Rating: 125VAC
- 3.Contact Resistance: 30 M Ω Max.
- 4.Insulation Resistance: 500 M Ω Min. @ 500 VDC
- 5.Withstanding Voltage: 1000VAC RMS 50Hz 1 minute

MECHANICAL

- 1.Durability: 750 cycles Min.
- 2.PCB Retention pre-solder: 1 LB Min.

ENVIRONMENTAL

- 1.Storage: -40°C ~ +80°C
- 2.Operation: -40°C ~ +70°C



ORDER INFORMATION

KLS12-108 - 8P8C - 1x8 - 2 - G/Y - 2 - XX - X

Part Number	Point No.	Ports	Shielded	LED Style	Back Peg	Gold Plating	Plastic
	8P8C Point	1x1-1 Ports 1x2-2 Ports 1x4-4 Ports 1x6-6 Ports 1x8-8 Ports	1-With Shielded 2-EMI Shielded 3-Top EMI Shielded	G/Y-Green / Yellow Y/G-Yellow / Green R/G-Red / Green G/R-Green / Red G/G-Green / Green Y/Y -Yellow / Yellow 0-Without LED	0-Without Back Peg 1-1 Back Peg 2-2 Back Peg	01-Fu" 02-3u" 03-6u" 04-15u" 05-30u" 06-50u	1-Nylon66 2-Nylon46 3-PBT