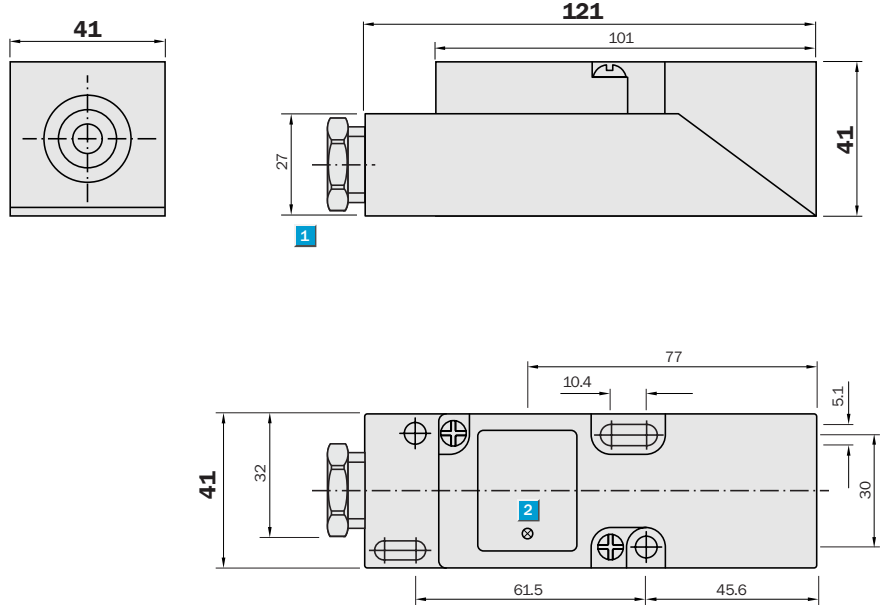


Sensing range
15 / 20 mm

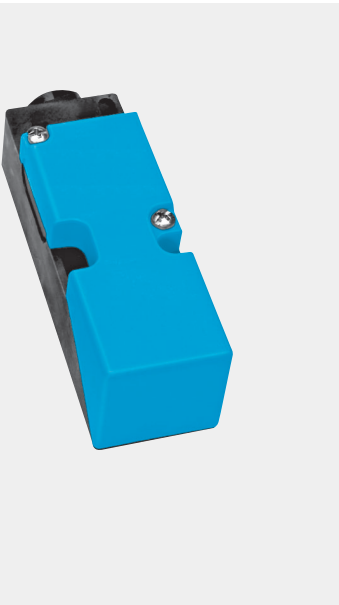
Inductive sensor

- Variable switching zone
- Programmable NO/NC function
- Short-circuit protection (pulsed)
- Terminal
- Enclosure rating IP 65

Dimensional drawing



- 1 Connection
- 2 Display LED

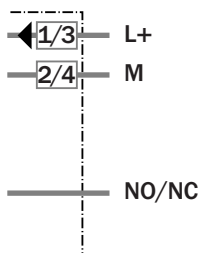


Connection type

- IQ40-15BPP-KKO
- IQ40-20NPP-KKO



Terminal, M20 x 1.5



Technical specifications		IQ40-	15BPP -KKO	20NPP -KKO								
Sensing range S_n	15 mm											
	20 mm											
Electrical configuration	DC 3-wire											
Supply voltage V_s	DC 10 ... 36 V											
Voltage drop U _d	≤ 2.5 V ¹⁾											
Power consumption	≤ 15 mA ²⁾											
Continuous current I_a	≤ 250 mA											
Time delay before availability t _v	≤ 4 ms											
Hysteresis H, of s _r	1 ... 15 %											
Repeatability R	≤ 10 % (U _b and T _a constant) ³⁾											
Temperature drift, of s _r	± 10 %											
EMC	According to EN 60947-5-2											
Switching output	PNP											
Output function	Programmable											
Installation	Flush											
	Non-flush											
Connection type	Cable gland, Terminal, M20 x 1.5											
Enclosure rating	IP 65 ⁴⁾											
VDE protection class	<input type="checkbox"/>											
Max. switching frequency	300 Hz											
Dimensions	40 x 40 x 121 mm ⁵⁾											
Short-circuit protection	✓ ⁶⁾											
Reverse polarity protection	✓											
Power-up pulse suppression	✓											
Shock/vibration stress	30 g, 11 ms/10 ... 55 Hz, 1 mm											
Ambient temperature T _a	-25 °C ... +80 °C											
Housing material	Plastic											

¹⁾ at I_a max and U_b 24 V
²⁾ without load

³⁾ of s_r
⁴⁾ according to EN 60529

⁵⁾ Width x height x depth
⁶⁾ (pulsed)

Ordering information

Type	Order No.
IQ40-15BPP-KKO	7 900 219
IQ40-20NPP-KKO	7 900 221