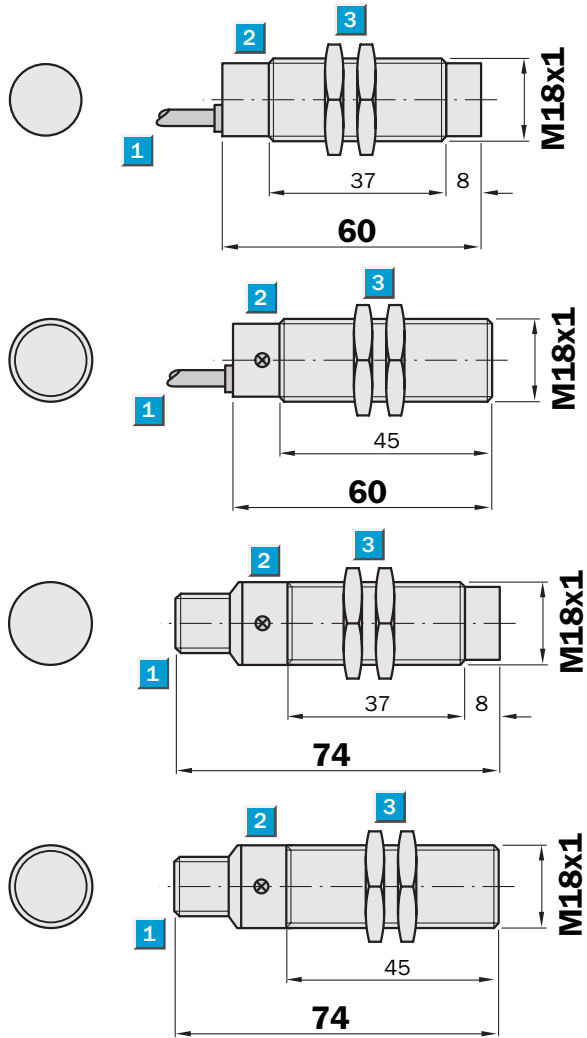


Sensing range
5 / 8 mm

Inductive sensor

- Free configurable output functions in one sensor PNP / NO, PNP / NC NPN / NO, NPN / NC
- Short-circuit protection
- Robust brass housing, nickel-plated with fine thread M18 x 1 mm
- Enclosure rating IP 67
- LED status indicator (NO function)

Dimensional drawing

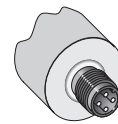
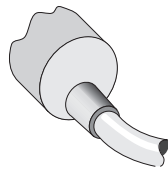


- 1 Connection
- 2 Display LED
- 3 Fastening nuts (2 x); width across 24, metal

Connection type

IM18-05BCP-ZW1
IM18-08NCP-ZW1

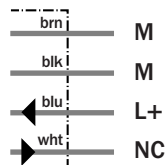
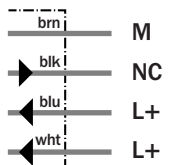
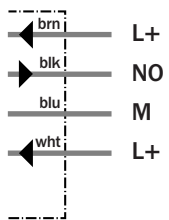
IM18-05BCP-ZC1
IM18-08NCP-ZC1



4 x 0.34 mm²

PNP version

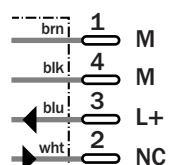
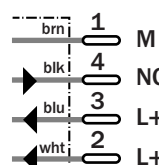
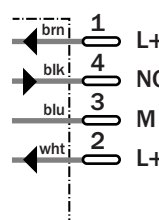
NPN version



M12, 4-pin

PNP version

NPN version



See chapter Accessories

Connector, M12, 4-pin
Mounting systems

Technical specifications		IM18-	05BCP-ZW1	05BCP-ZC1	08NCP-ZW1	08NCP-ZC1						
Sensing range S_n	5 mm											
	8 mm											
Electrical configuration	DC 4-wire											
Supply voltage V_s	DC 10 ... 30 V											
Ripple U_{pp}	$\leq 10 \%$											
Voltage drop U_d	$\leq 1.2 V^1$											
Power consumption	$\leq 30 mA^2$											
Continuous current I_a	$\leq 100 mA$											
Time delay before availability t_v	$\leq 200 ms$											
Hysteresis H, of s_r	2 ... 10 %											
Repeatability R	$\leq 5 \%$ (U_b and T_a constant) ³⁾											
Temperature drift, of s_r	$\pm 10 \%$											
EMC	According to EN 60947-5-2											
Switching output	PNP/NPN config.											
Output function	Configurable											
Installation	Flush											
	Non-flush											
Connection type	Cable, PVC, 2 m											
	Connector, M12, 4-pin											
Enclosure rating	IP 67 ⁴⁾											
Max. switching frequency	300 Hz											
Dimensions	M18 x 1 ⁵⁾											
Short-circuit protection	✓											
Reverse polarity protection	✓											
Power-up pulse suppression	✓											
Shock/vibration stress	30 g, 11 ms/10 ... 55 Hz, 1 mm											
Ambient temperature T_a	-25 °C ... +70 °C											
Housing material	Brass nickel-plated, plastic											
Tightening torque	40 Nm											

¹⁾ at I_a max

²⁾ without load

³⁾ of s_r

⁴⁾ according to EN 60529

⁵⁾ Thread diameter x pitch (mm)

Order information

Type	Order no.
IM18-05BCP-ZW1	7 902 935
IM18-05BCP-ZC1	7 902 936
IM18-08NCP-ZW1	7 902 937
IM18-08NCP-ZC1	7 902 938