

Boom reflector for Cree's MC-E series of LEDs



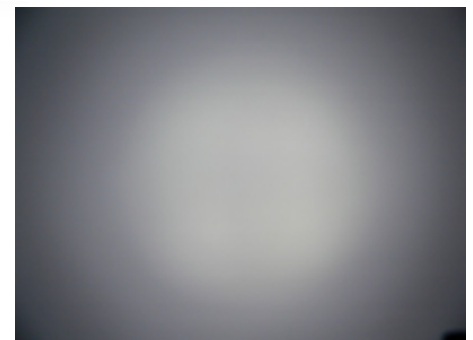
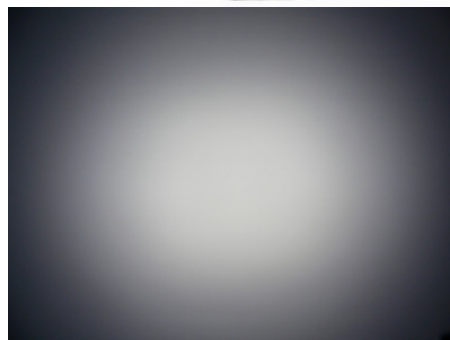
www.cree.com



- Specially designed for Cree's MC-E series of LEDs.
- Special care taken to make a uniform white or warm white illumination. Lenses work well with other colors, too.
- Lens material optical grade metallized PC. Allows use of high current and temperature conditions
- Best available optical efficiency, up to 90%.

LENS TYPES

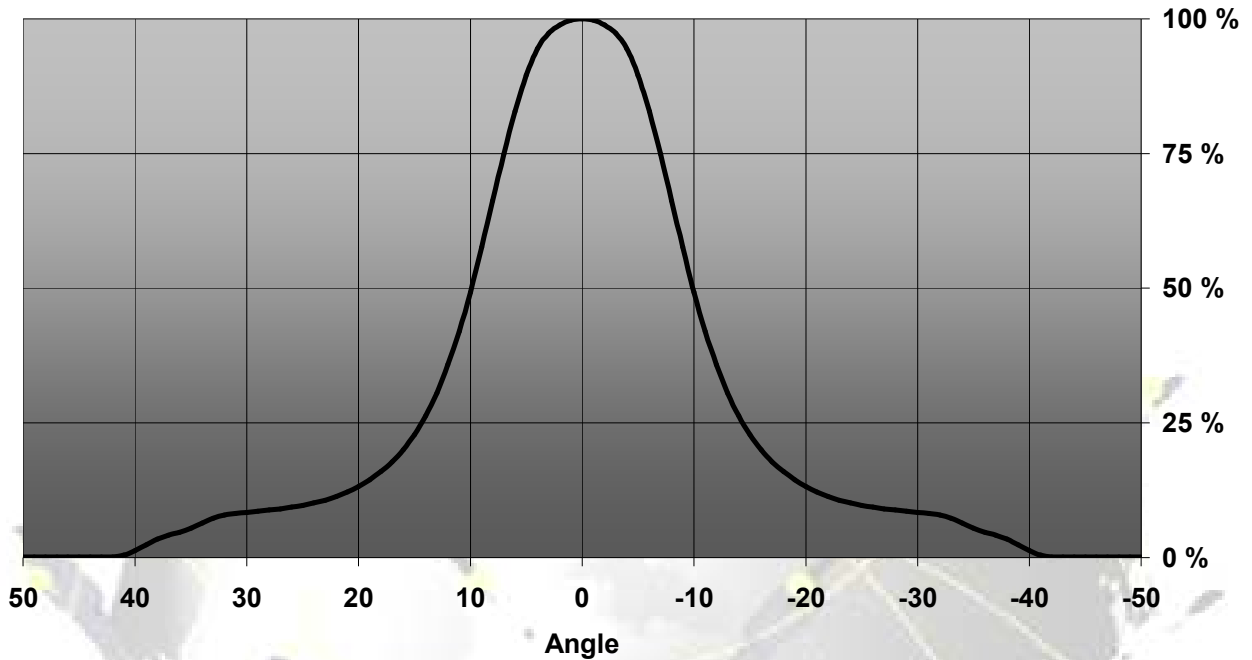
NAME	ORDERING CODE	FWHM Angle
BOOM-MC-S	BOOM-MC-S (n. C10569)	±10°
BOOM-MC-M	BOOM-MC-M (n. C10570)	±19°
BOOM-MC-W	BOOM-MC-W (n. C10571)	±24°



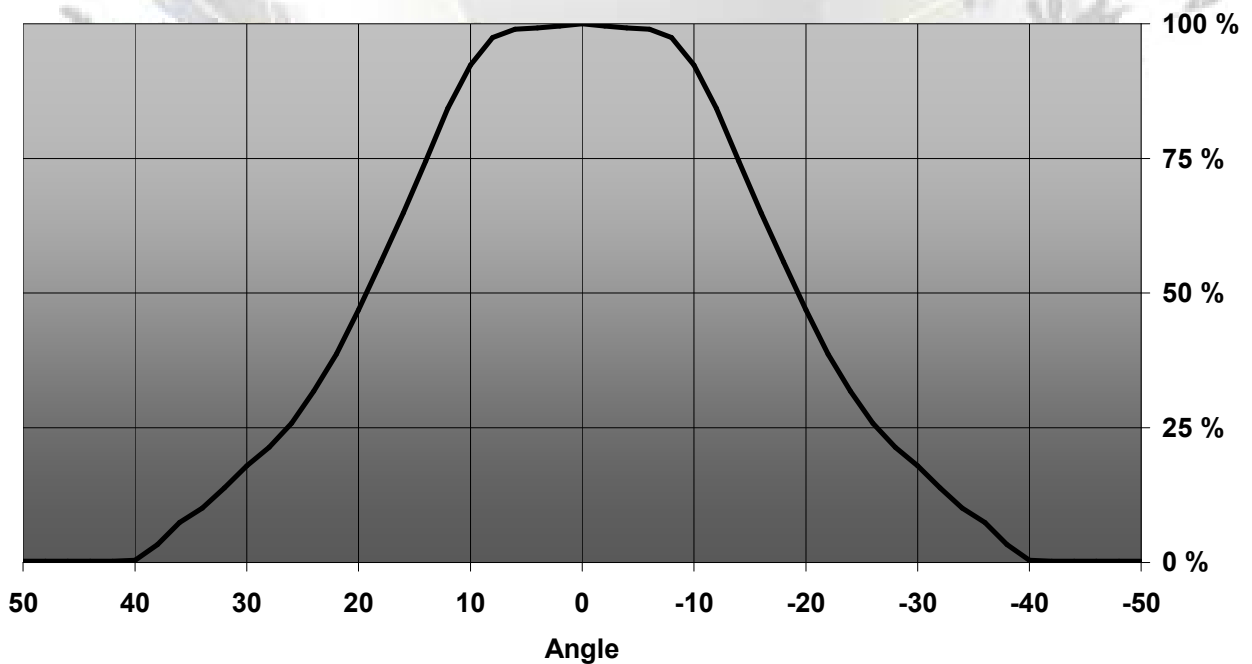
© Ledil Oy – PRELIMINARY - Subject to change without prior notice

MEASUREMENT DATA

Relative Intensity of BOOM-MC-S

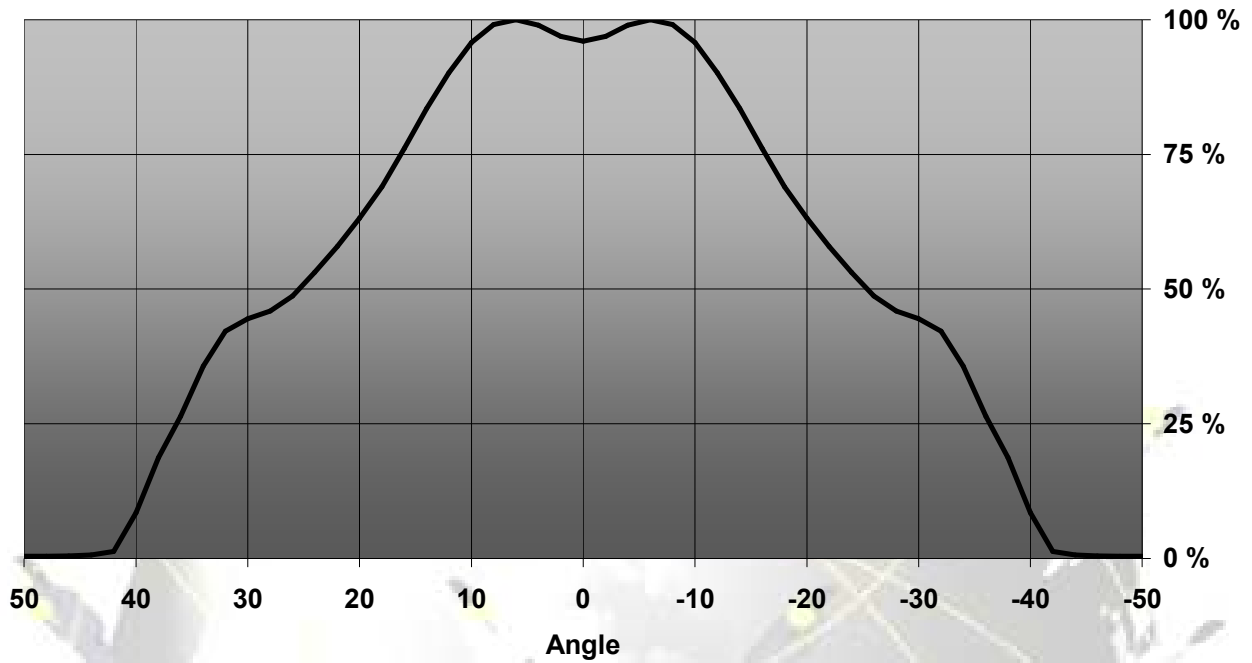


Relative Intensity of BOOM-MC-M



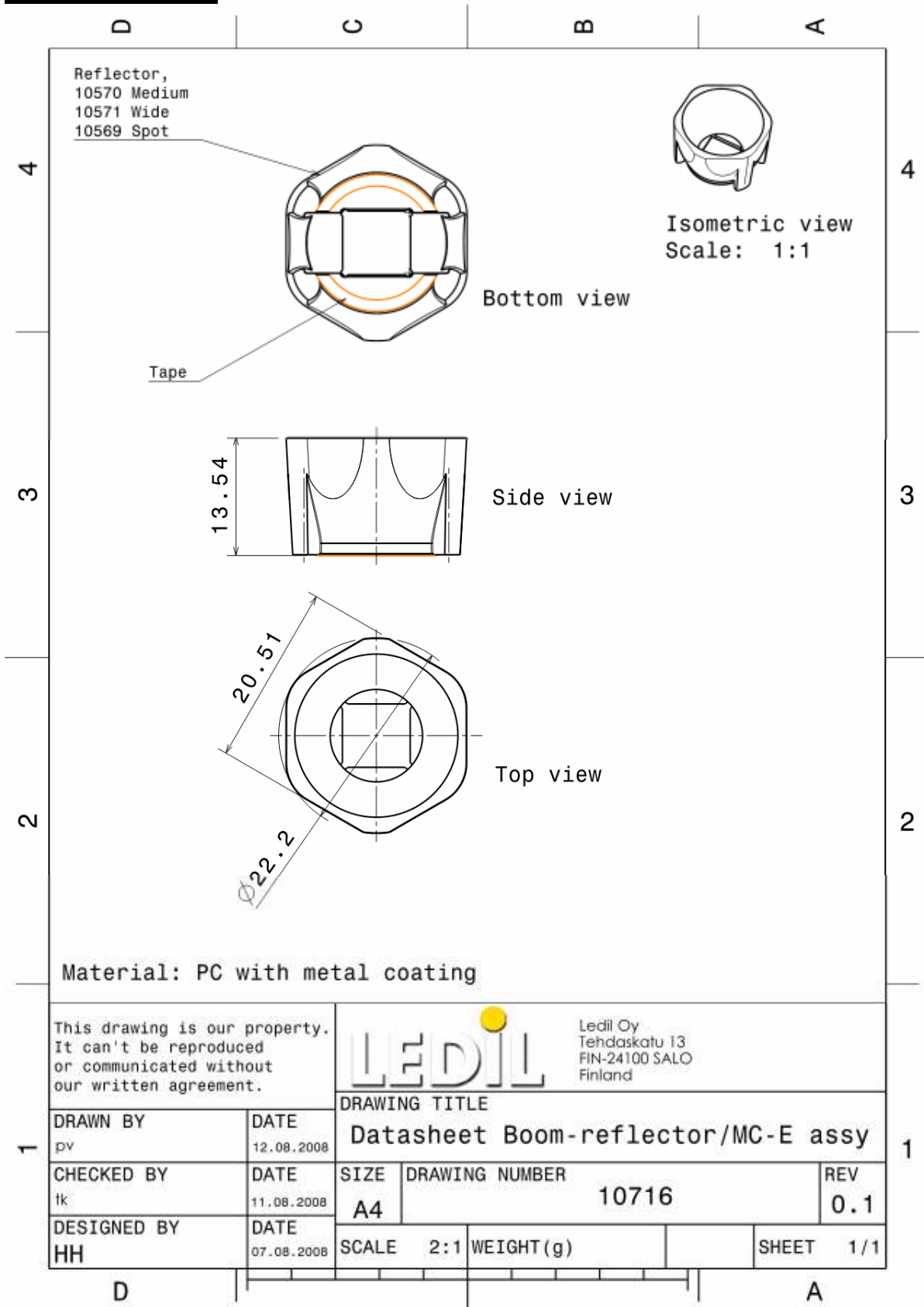
© Ledil Oy – PRELIMINARY - Subject to change without prior notice

Relative Intensity of BOOM-MC-W



© Ledil Oy – PRELIMINARY - Subject to change without prior notice

DRAWINGS



This drawing is our property. It can't be reproduced or communicated without our written agreement.



Ledil Oy
Tehdaskatu 13
FIN-24100 SALO
Finland

DRAWING TITLE

Datasheet Boom-reflector/MC-E assy

DRAWN BY
pv

DATE
12.08.2008

CHECKED BY
tk

DATE
11.08.2008

SIZE
A4

DRAWING NUMBER
10716

REV
0.1

DESIGNED BY
HH

DATE
07.08.2008

SCALE 2:1 WEIGHT (g)

SHEET 1/1